

PETER'S ROCK PARK:

Using Mapping Technology to Enrich the Hiking Experience

Issue

- Peter's Rock Park is owned & maintained by a small land trust located in North Haven, Connecticut.
- While the park is fairly well known in the area, it does not see the popularity that it should given the perfect hiking or outing conditions (Fig. 1).
- The use of technology by younger generations is second nature. The thinking was if technology and the park could be connected in some manner more young people would visit the park.

Objectives

- Our map will use GIS technology to create a park experience that is both informative and fun. We will:
- Create a base map with a variety of data, including trail data and points of interest.
 - Upload the map to Google maps, and allow it to be used by the public through a QR code at the park.
 - Update the Facebook page to inform the public of this and other updates.

The Approach

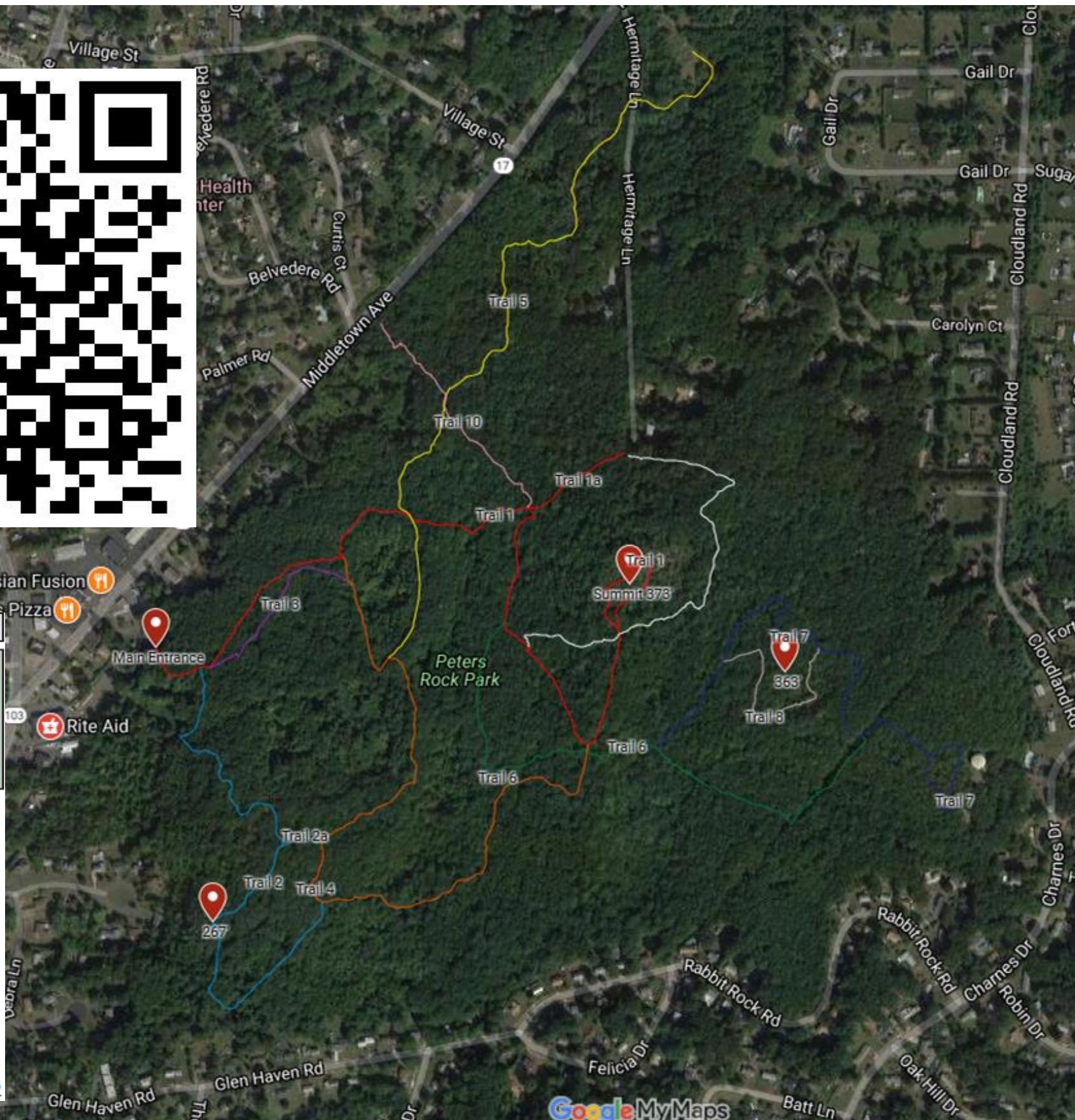
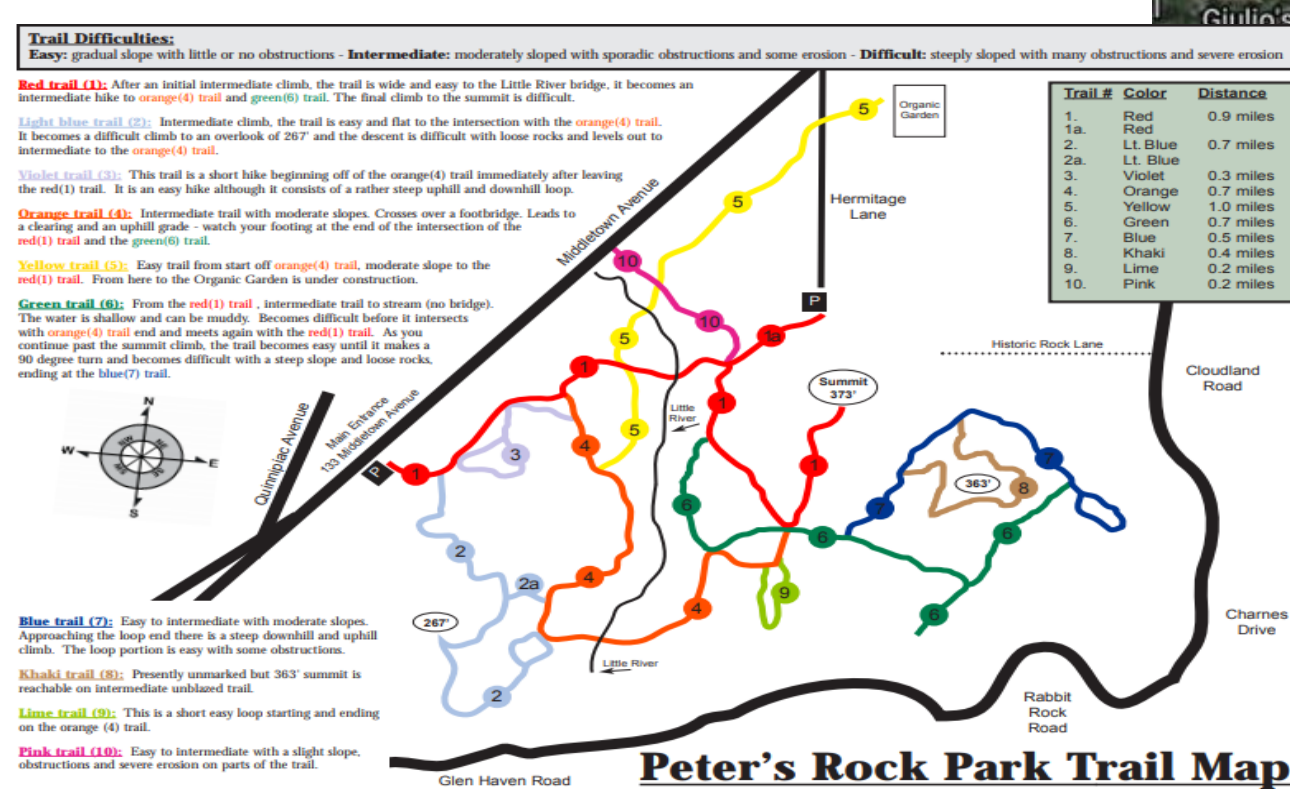
- Firstly, we used Track Kit which is a GPS program we learned about from the CTP workshop to gather trail and other data at Peter's Rock for the map.
- Then we assembled the data into Google Maps and edited it to have accurate information about the trails and landmarks.
- Finally, we uploaded the map and made it public, making it accessible to anyone with access to the QR code.



Fig. 1 (Left) A group of hikers at the summit of Peter's Rock. (Right) A group of hikers exploring one of the trails.

The Map

Fig. 2 (Far Right) The interactive Google map of Peter's Rock park. (Near Right) The QR code that is on a sign at the park is used to access the map on your phone. (Bottom) The static map, created by SCROG.



- This project resulted in the updated, interactive map that can be easily reached through a QR code found at the park (Fig. 2).
- Hikers can use their phone or devices to load the map, follow their movement as they navigate the trail and click on trail features to learn more info.
- We improved on the previous, static map (Fig. 2) by utilizing GIS technology to make it interactive and informative.

What's Next?

This project, while beneficial to the park, is still only a base. In the future, we plan to build off of this project and add more information to the map, like geocaches or other points of interest. These updates will add to the already informative and entertaining map that we have created using GIS technology.



Nicholas Moran & Joanne Chvisuk
Lyman Hall High School | Peter's Rock Park Association

