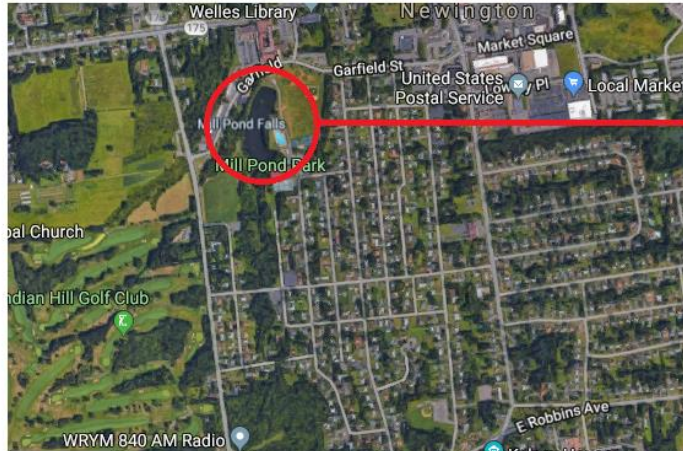


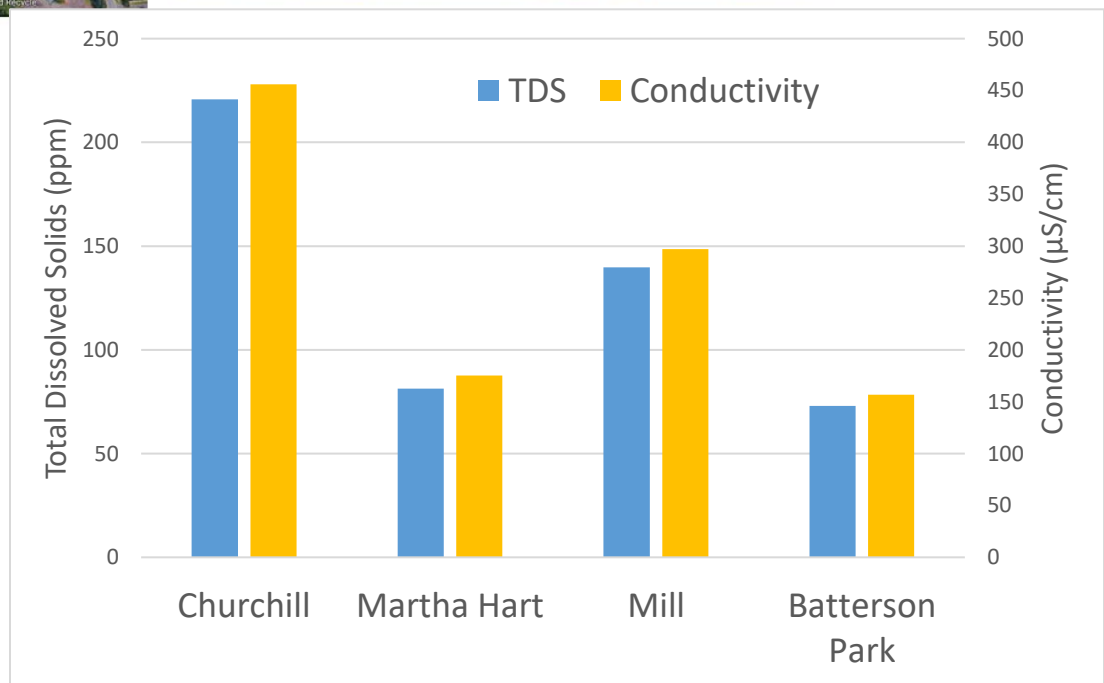
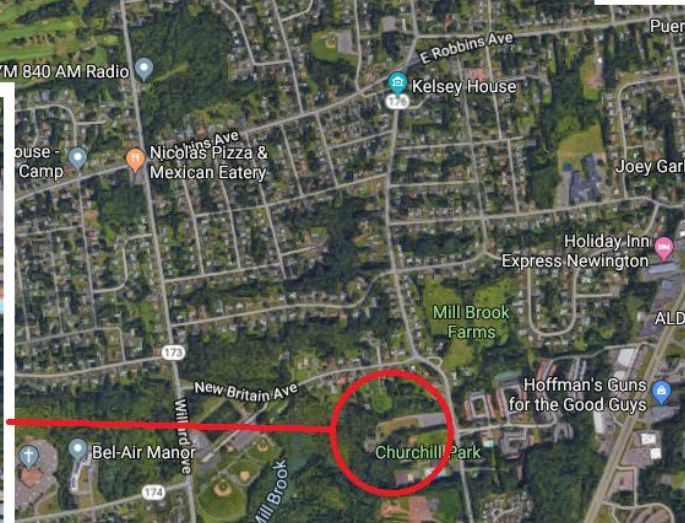


Natural Resources Conservation Academy 2018-2019 CTP participants Ayele Ayika and Kathleen-Marie Clark measured water quality at four ponds in Newington and New Britain CT town parks. Below are satellite maps of their study ponds and some of the data they collected.

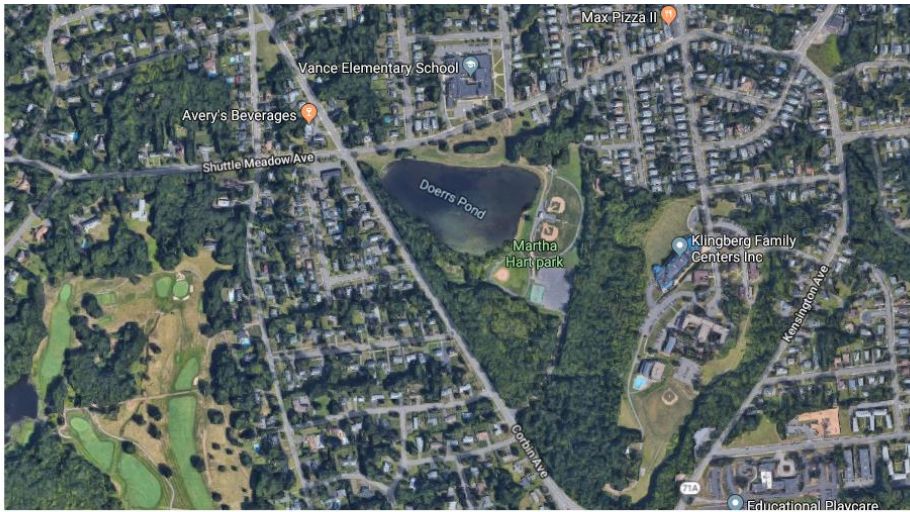
## Mill Pond



## Churchill Pond

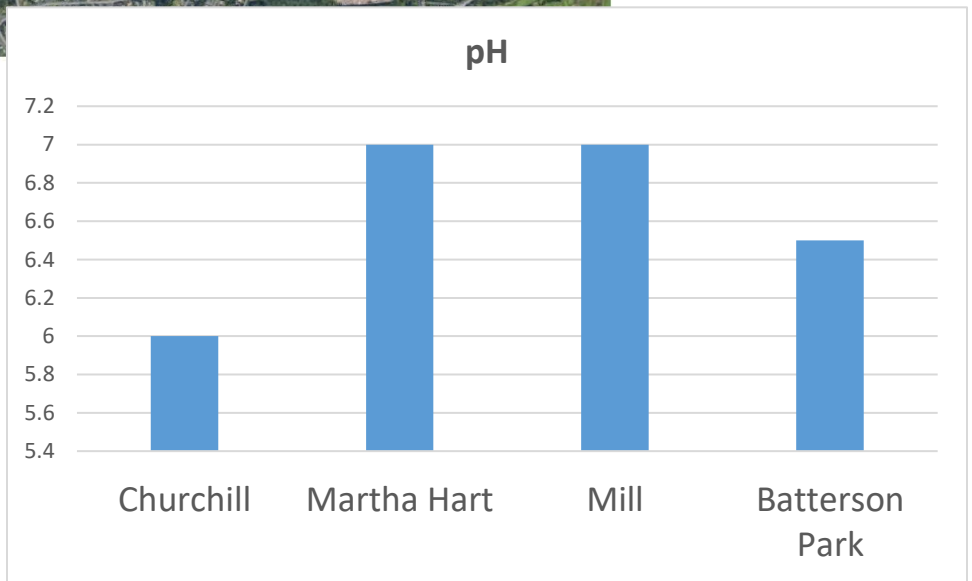
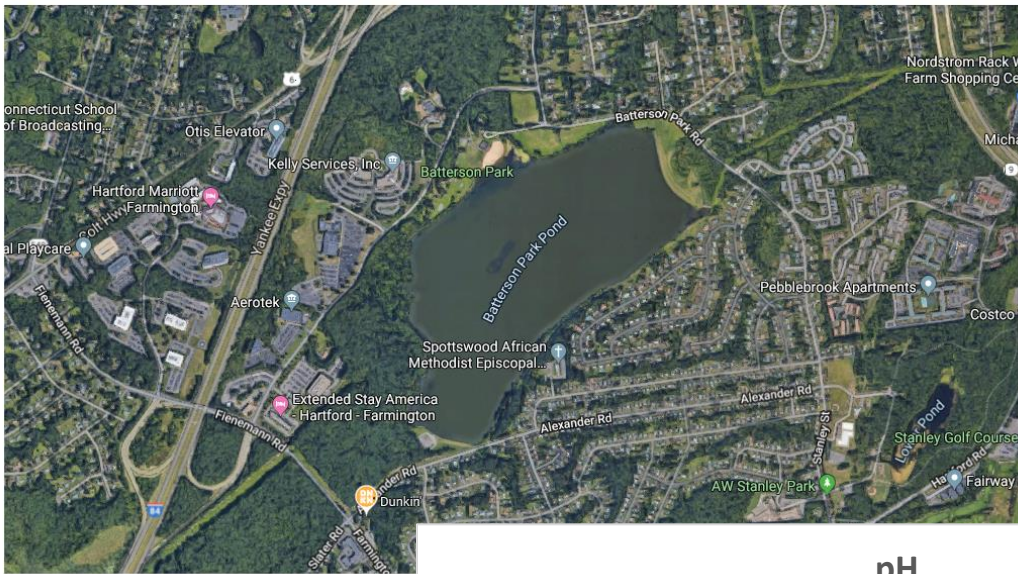






Martha  
Hart  
Pond

## Batterson Park Pond



Natural Resources Conservation  
**Academy**  
University of Connecticut