













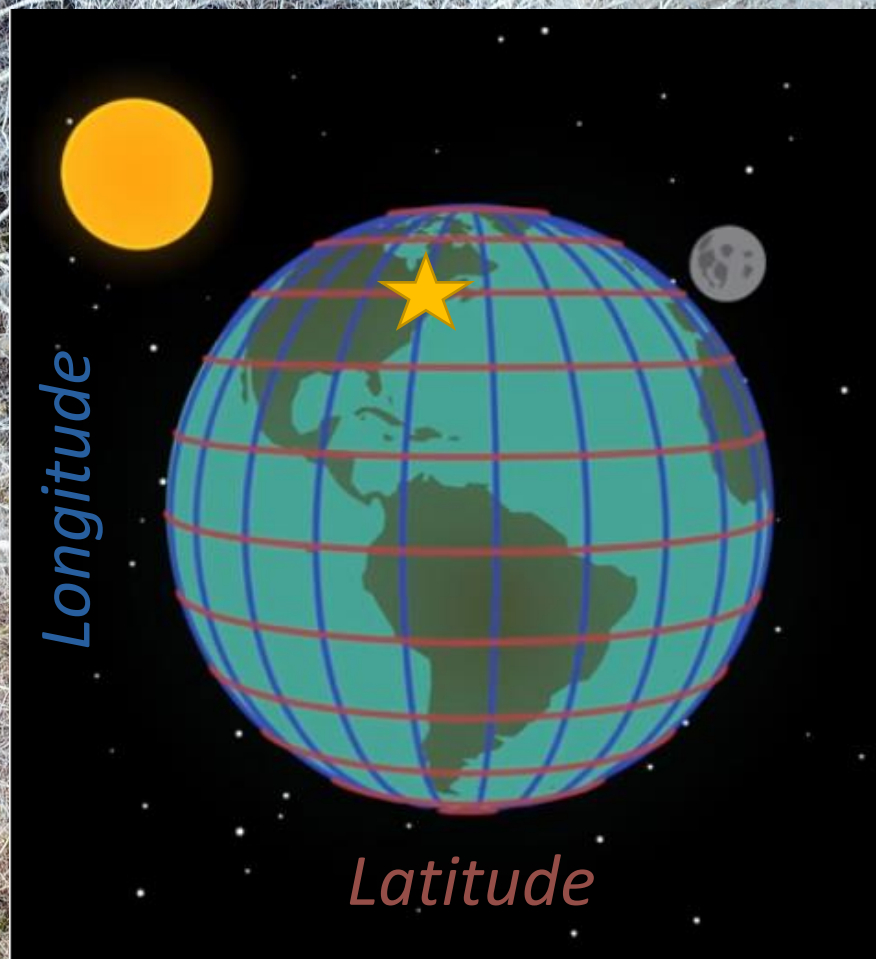
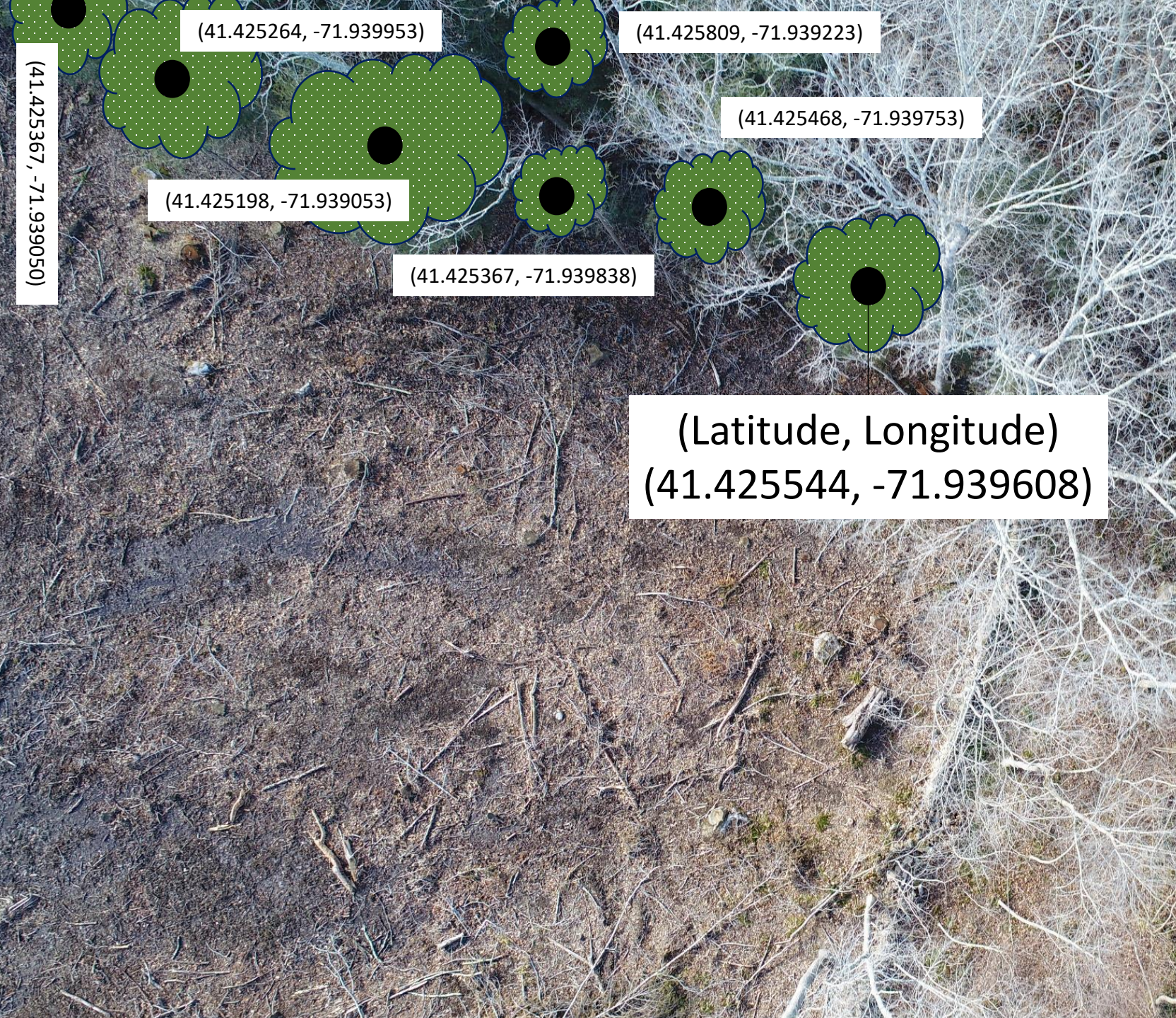
deciduous understory

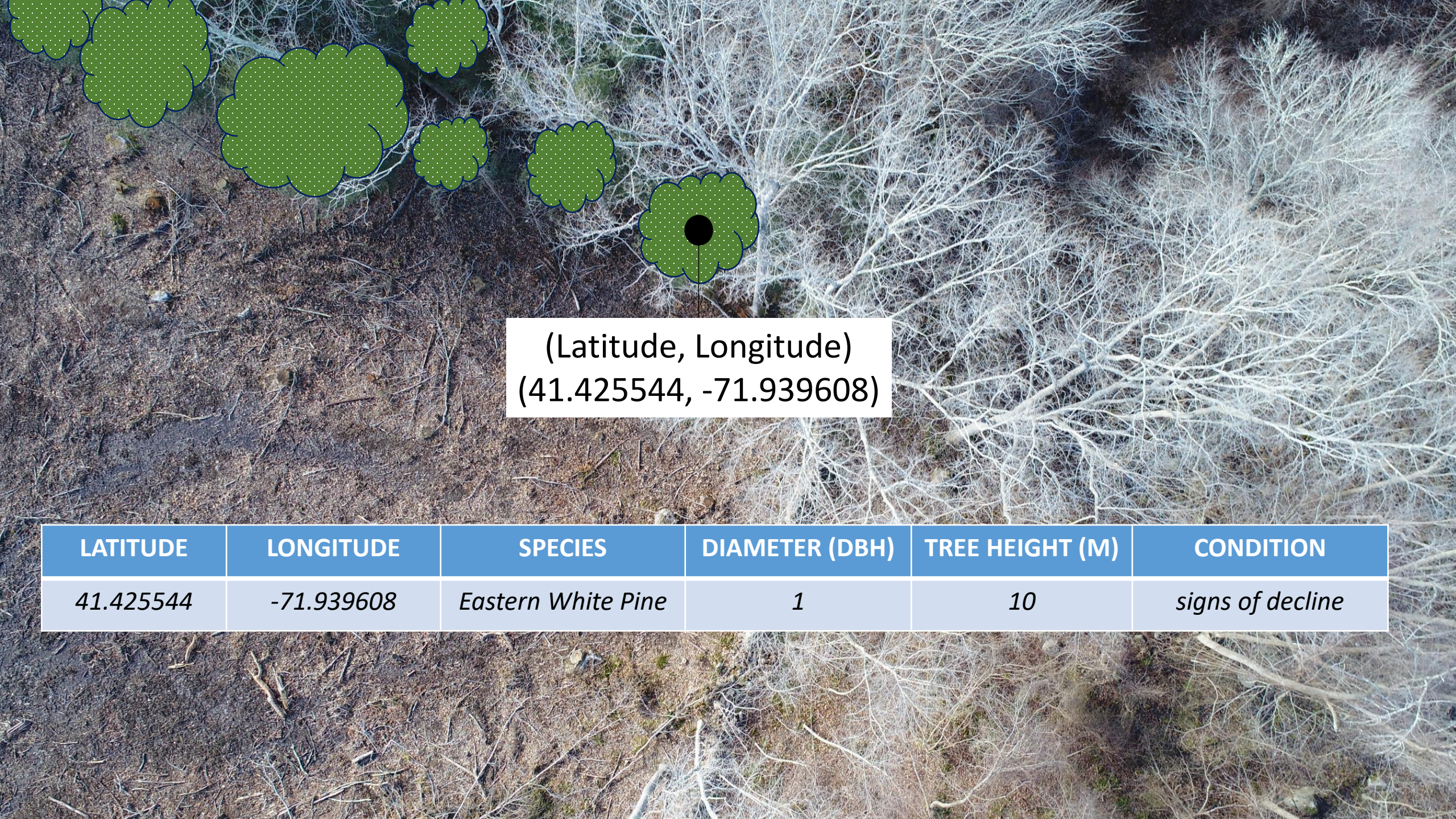
timber harvest area

vernal pool?

stone wall

stream





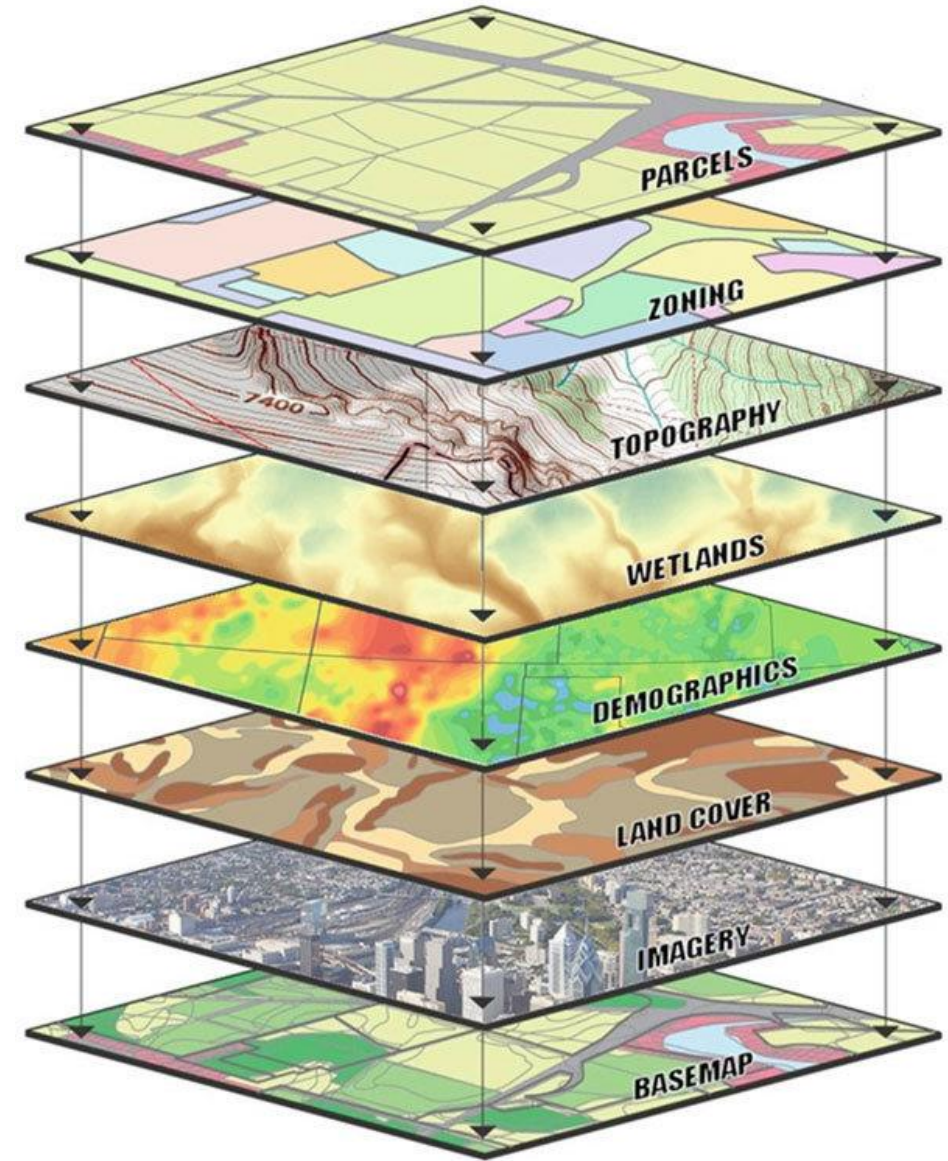
(Latitude, Longitude)
(41.425544, -71.939608)

LATITUDE	LONGITUDE	SPECIES	DIAMETER (DBH)	TREE HEIGHT (M)	CONDITION
41.425544	-71.939608	<i>Eastern White Pine</i>	1	10	<i>signs of decline</i>

Geographic Information Systems

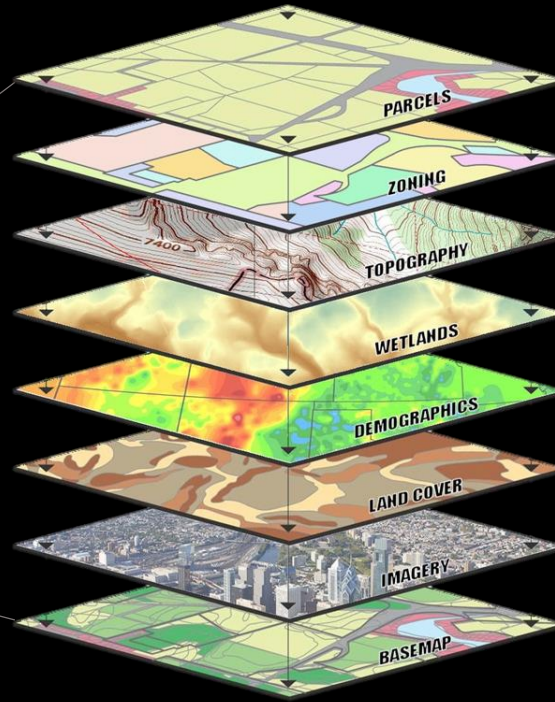
GIS is a technological field that incorporates geographical features with tabular data in order to map, analyze, and assess real-world problems.

maps software apps
data analysis people





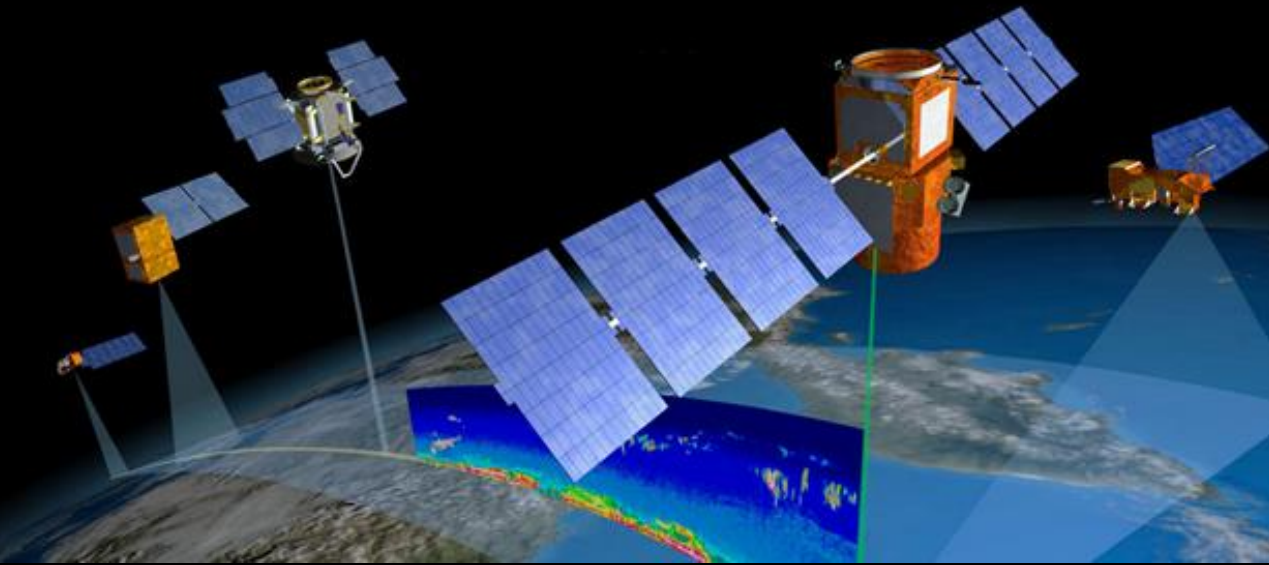
GIS



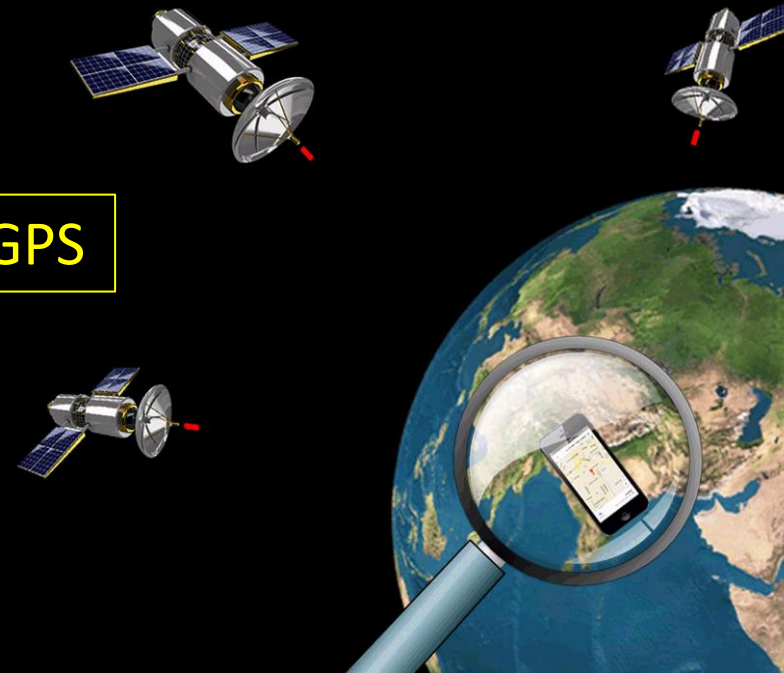
Emerging Tech



Remote Sensing



GPS



Drones Take Off as Wildlife Conservation Tool

UAVs are poised to revolutionize ecology and even save scientists' lives.



By Nancy Averett
July-August 2014

Popular Stories

- Pumpkin Bird Feeder Makes a Happy Harvest For Birds
- How to Tell a Raven From a Crow
- How to Make Hummingbird Nectar
- To Help Birds This Winter, Go Easy on Fall Yard Work
- Learn to Identify Five Owls by Their Calls



Red pandas began to track using drones and GPS. They are on the verge of extinction

BY JOHN KESSLER JUNE 15, 2020 11:11 AM GMT+0300 243 VIEWS



THE CONVERSATION

Academic rigor, journalistic flair

COVID-19Arts + CultureEconomy + BusinessEducationEnvironment + EnergyEthics + ReligionHealthPolitics + SocietyScience + Technology

Heat-detecting drones are a cheaper, more efficient way to find koalas

July 6, 2020 3:55pm EDT

Drones let B.C. researchers act as 'fly on the wall' to observe orca behaviour



UBC scientists are studying the feeding behaviour of southern and northern resident killer whales

CBC News · Posted: Nov 04, 2019 5:00 AM PT | Last Updated: November 4, 2019



Penguin super-colony spotted from space

By Jonathan Amos and Victoria Gill
Science correspondents, BBC News

🕒 2 March 2018 | 📄 📱 📧 📧 📧 Share



Largest population of penguins found in Antarctic Peninsula

How augmented reality can help create sustainable, environment-friendly smart cities

Augmented & virtual reality can help develop public spaces with holistic approach to environmental preservation, good governance & assets management.

SWATI SUDHAKARAN 19 January, 2020 12:24 pm IST

Researchers use virtual reality, GIS data to enhance trail management

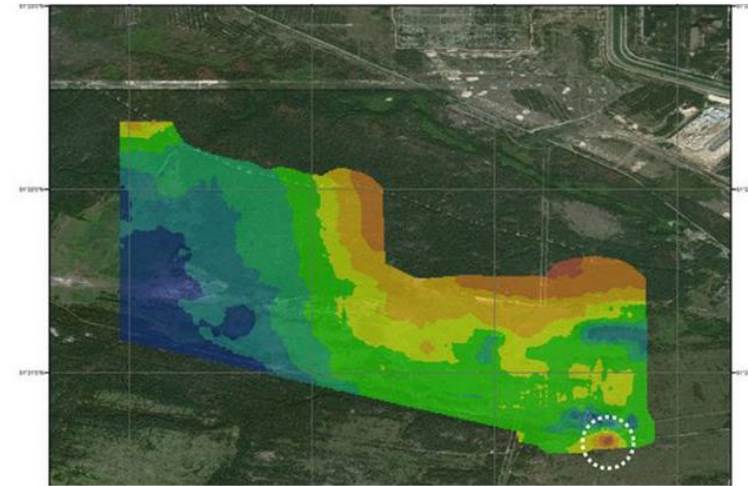
By Robby Korth 381-1679 Apr 26, 2019 📄 📱 📧 📧 📧



Chernobyl 3D radiation hotspot map created using LiDAR technology

INTERNATIONAL / NEWS / UK by SAM LEWIS on FEBRUARY 12, 2020

FACEBOOK TWITTER LINKEDIN



For Global Leaders Focused on Climate Action, GIS Technology Is Foundational

A Climate of Change
April 23, 2021



Commitments this week by 40 world leaders and more than 300 businesses to address climate change, with ambitious goals for emission reductions, make me excited about our ability to achieve meaningful change in my lifetime. In the wake of the coronavirus pandemic, our collective vulnerability helps us realize we are in this together. The pandemic disruption has provided a pause for reflection, and leaders are wise to use this time to focus on the causes of increasing climate calamities and biodiversity decline. We can, and must, take global action.

Participatory GIS & Community Science



As Scientists Struggle with Rollbacks, Stay At Home Orders and Funding Cuts, Citizens Fill the Gap

Citizen science sees a boom in participation by people motivated by cuts of environmental protections and Covid-19 impacts on data gathering and justice.

JUN 23, 2020



