

Mapbook of HKHS Haddam, CT

By Cary Chadwick

Index

Map 1: Spring Aerial Imagery

Map 2: Hillshade Elevation

Map 3: Boundaries/Streets

Map 4: Hydric Soils

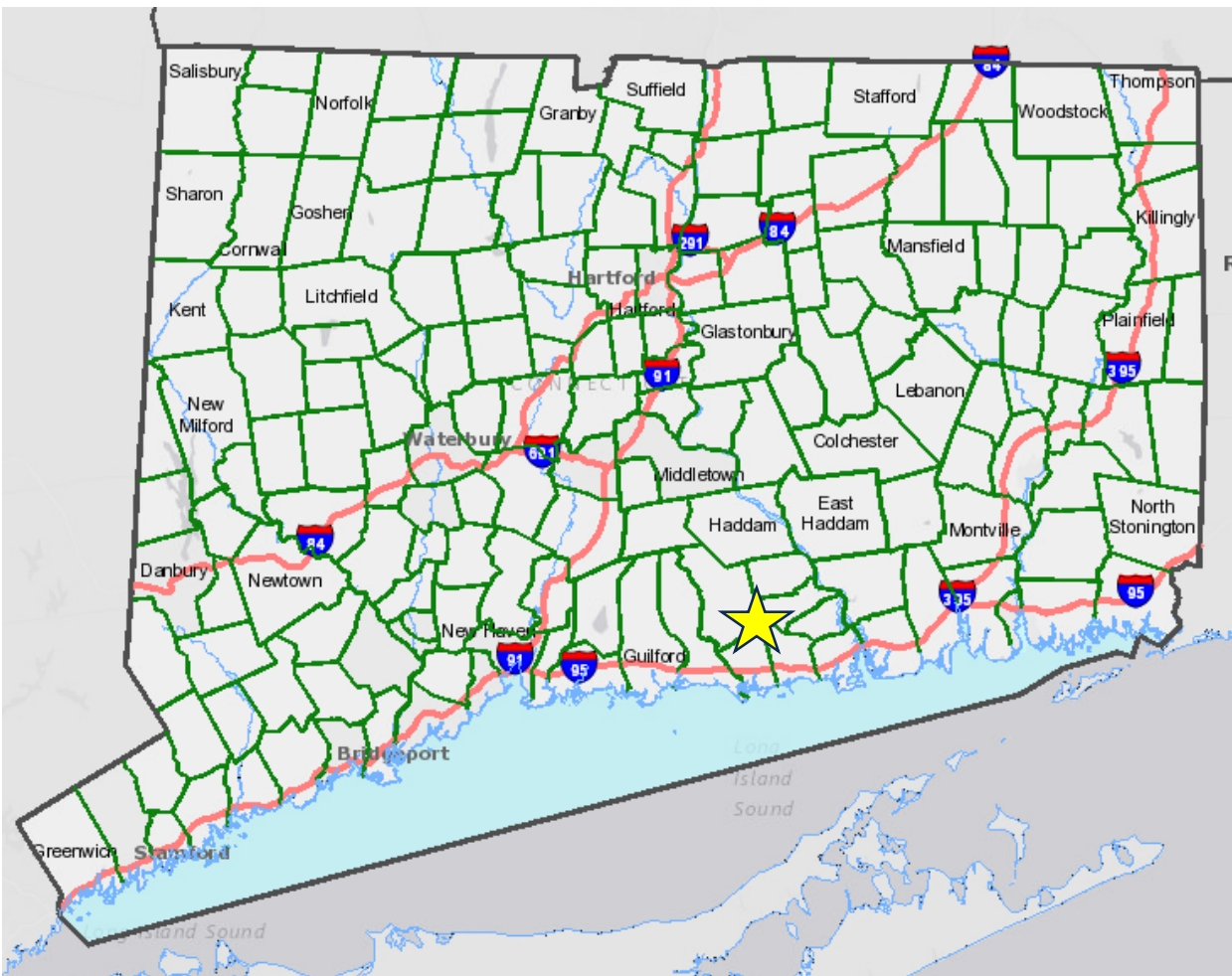
Map 5: Farmland Soils

Map 6: Open Space

Map 7: Critical Habitat & Natural Diversity DB Areas

Map 8: Watersheds, Hydrography & Wellhead protection areas

Map 9: Water Quality: Surface & Groundwater



2016 Spring Aerial Imagery

Flight managed the Capitol Region Council of Governments and funded by the CT Office of Policy and Management with contributions from the CT Dept. of Transportation and CT Dept. of Emergency Services and Public Protection.

3 inch pixels

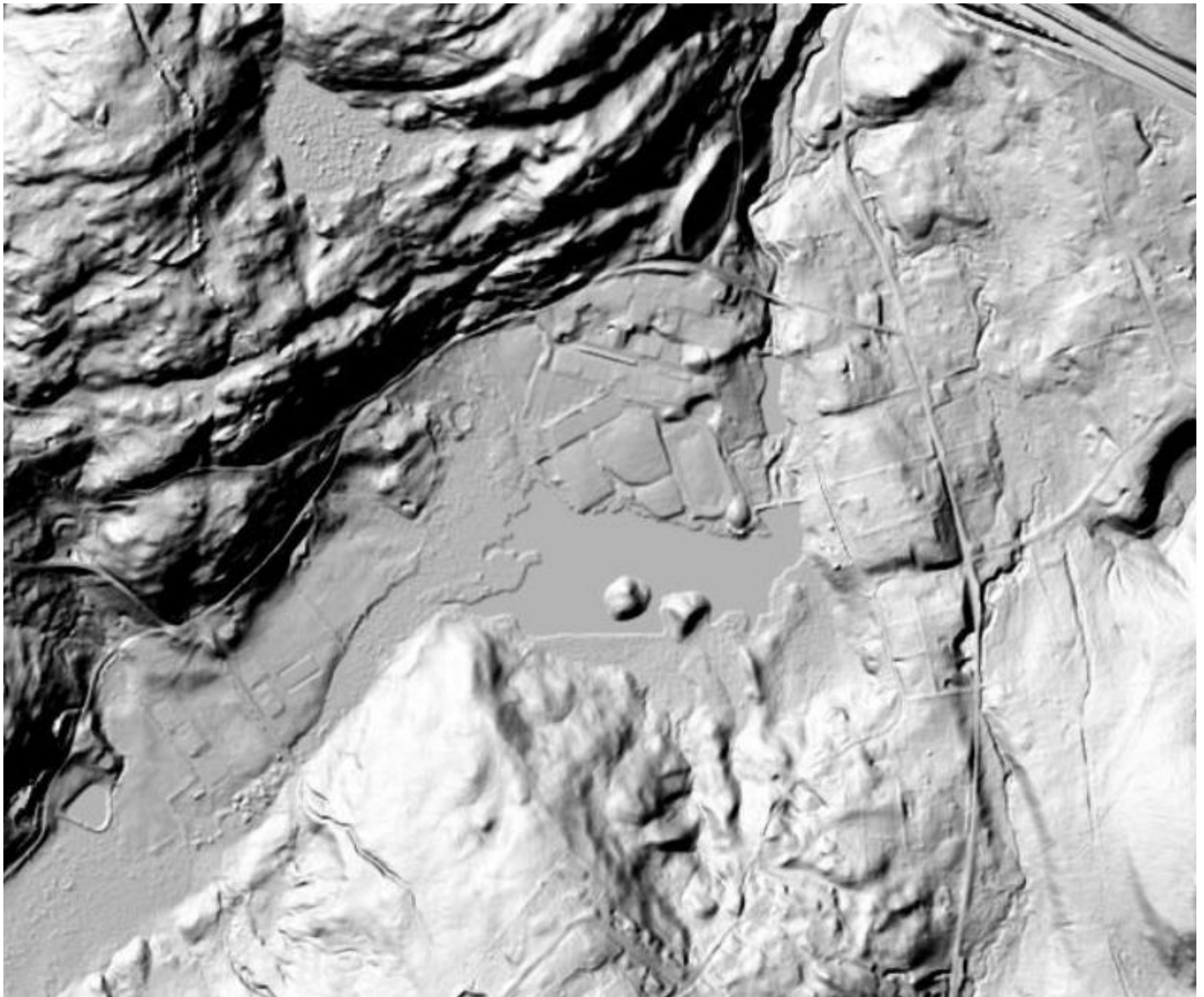
More information on <http://cteco.uconn.edu/data/flight2016/>



Hillshade

Elevation from Lidar and displayed as hillshade. Hillshade is a grayscale view of terrain that considers the sun's relative position.

More information on the CT ECO website <http://cteco.uconn.edu/data/lidar/>

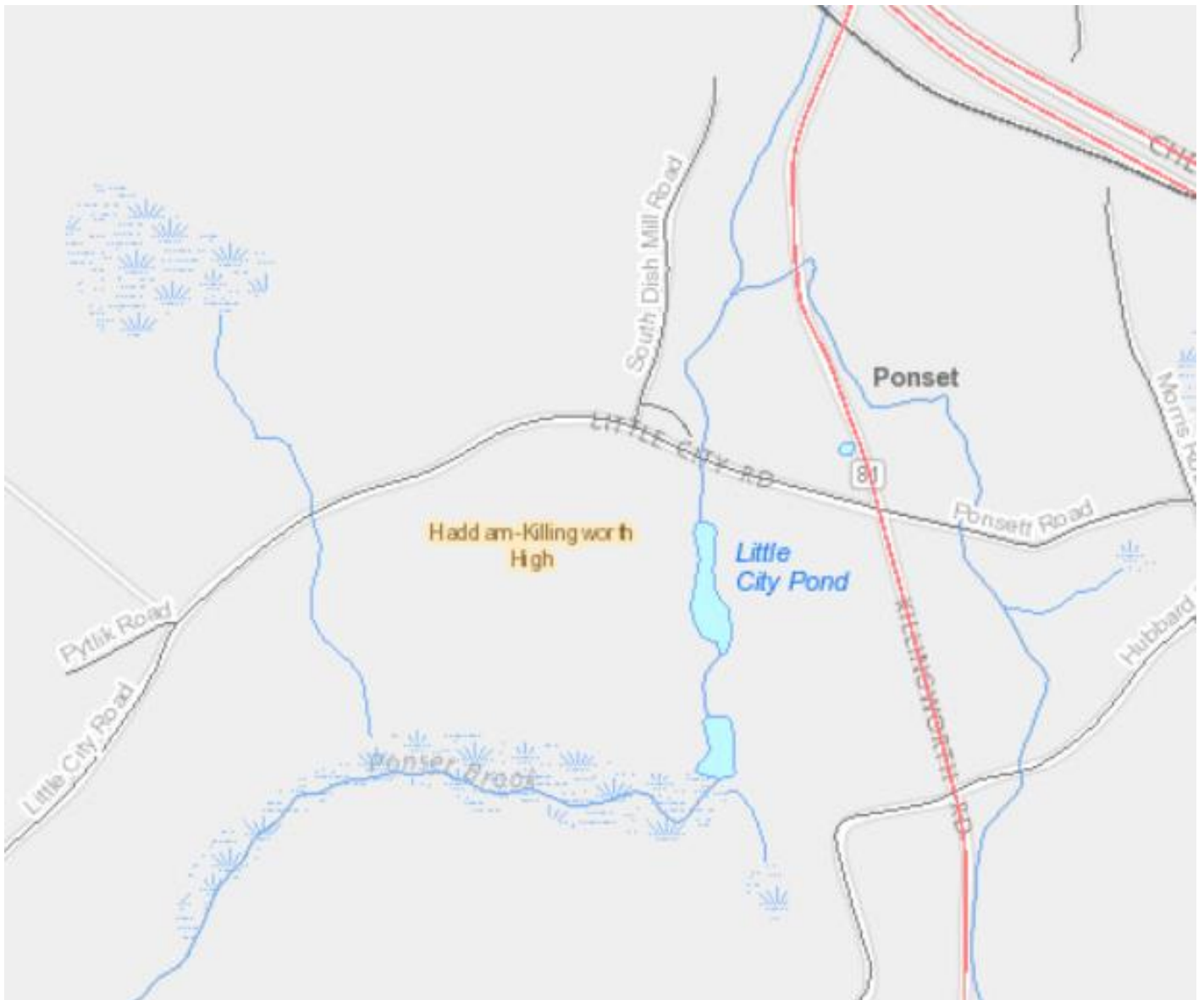


Boundaries & Streets

Base map information including airport, railroad, waterbody, watercourse and town boundary information.

Based on the most recently published 1:24,000-scale U.S. Geological Survey topographic quadrangle maps.

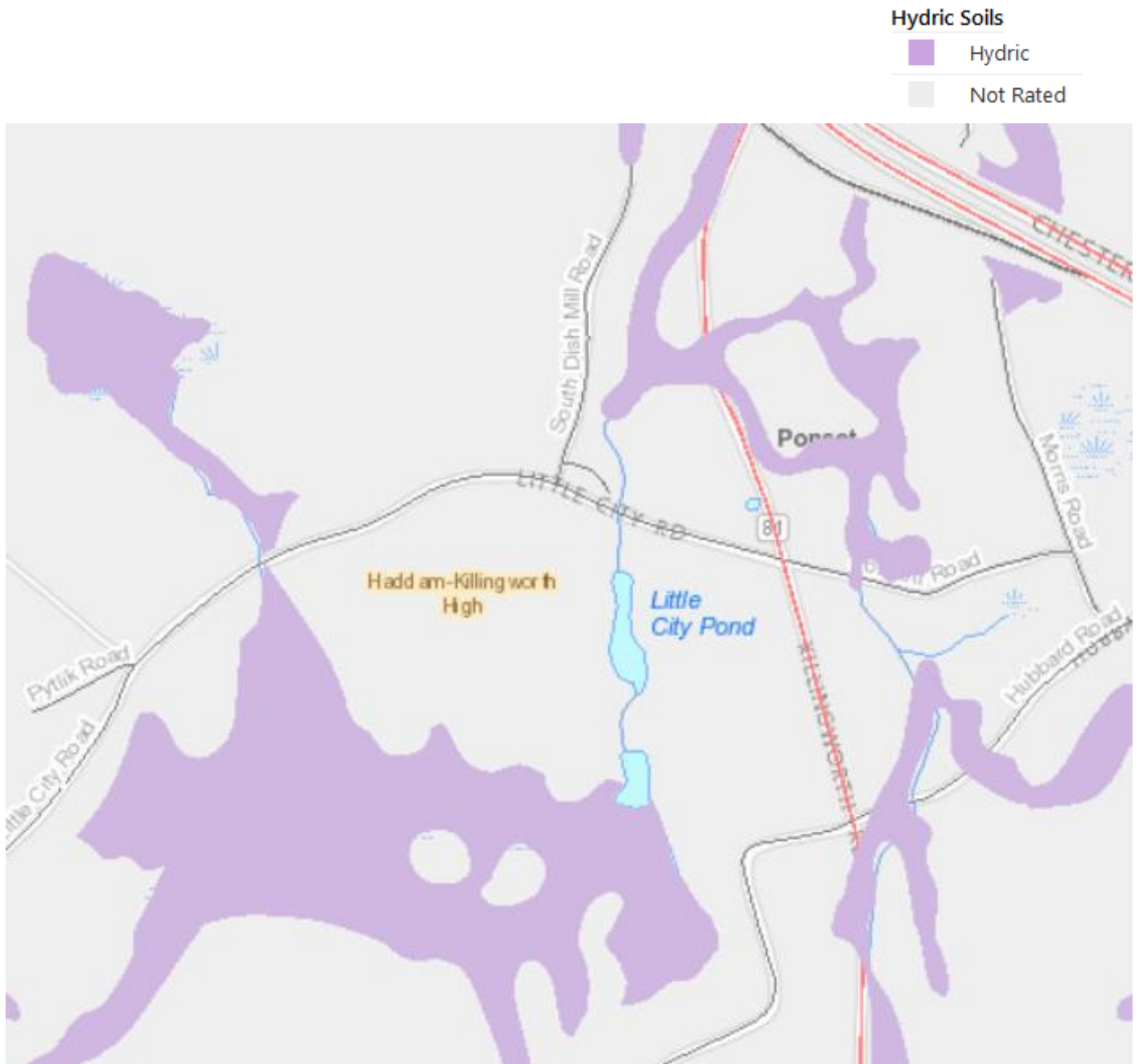
More information on <http://cteco.uconn.edu>.



Hydric Soils

Hydric soils are soils formed under conditions of saturation, flooding, or ponding long enough during the growing season to support the growth and reproduction of hydrophytic vegetation.

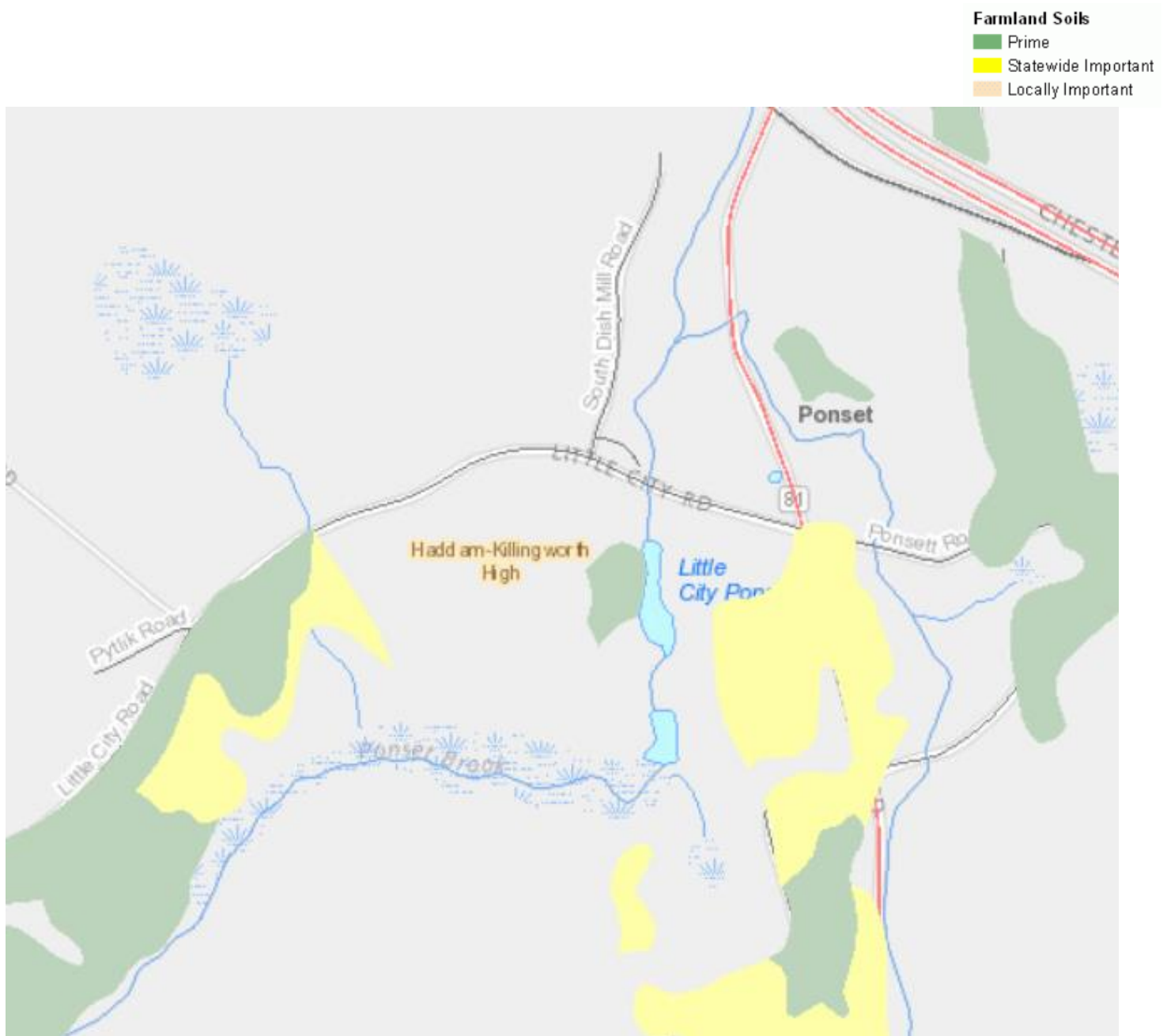
More information on the CT ECO website <http://cteco.uconn.edu/guides>



Farmland Soils

Farmland Soils includes land that is defined as prime, unique, or farmland of statewide or local importance. It identifies the location and extent of the most suitable land for producing food, feed, fiber, forage, and oilseed crops.

More information on the CT ECO website <http://cteco.uconn.edu/data/lidar/>

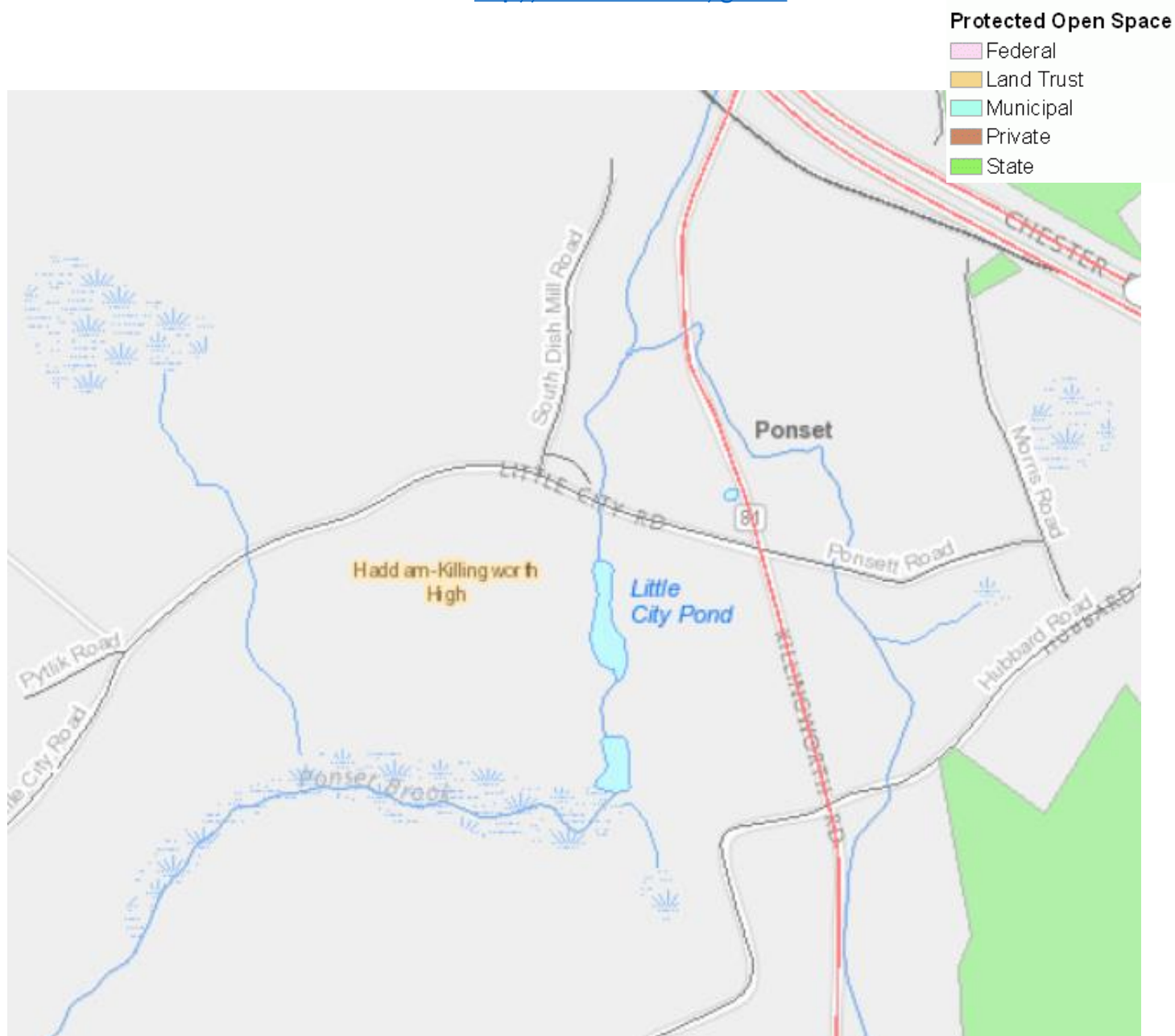


Open Space

Protected Open Space in an inventory of open space as defined by the Department of Environmental Protection Protected Open Space Mapping (POSM) project. These include: land or interest in land acquired for the protection of natural features of the state's landscape or essential habitat for endangered or threatened species; and land or an interest in land acquired to support and sustain non-facility-based outdoor recreation, forestry and fishery activities, or other wildlife or natural resource conservation or preservation activities.

Data is not included for every town in Connecticut because information is collected by DEEP from individual towns on an ongoing basis.

More information on the CT ECO website <http://cteco.uconn.edu/guides>



Critical Habitat & Natural Diversity DB Areas

Critical Habitat from the CT Dept. of Energy and Environmental Protection. More information in the CT ECO Data Guide

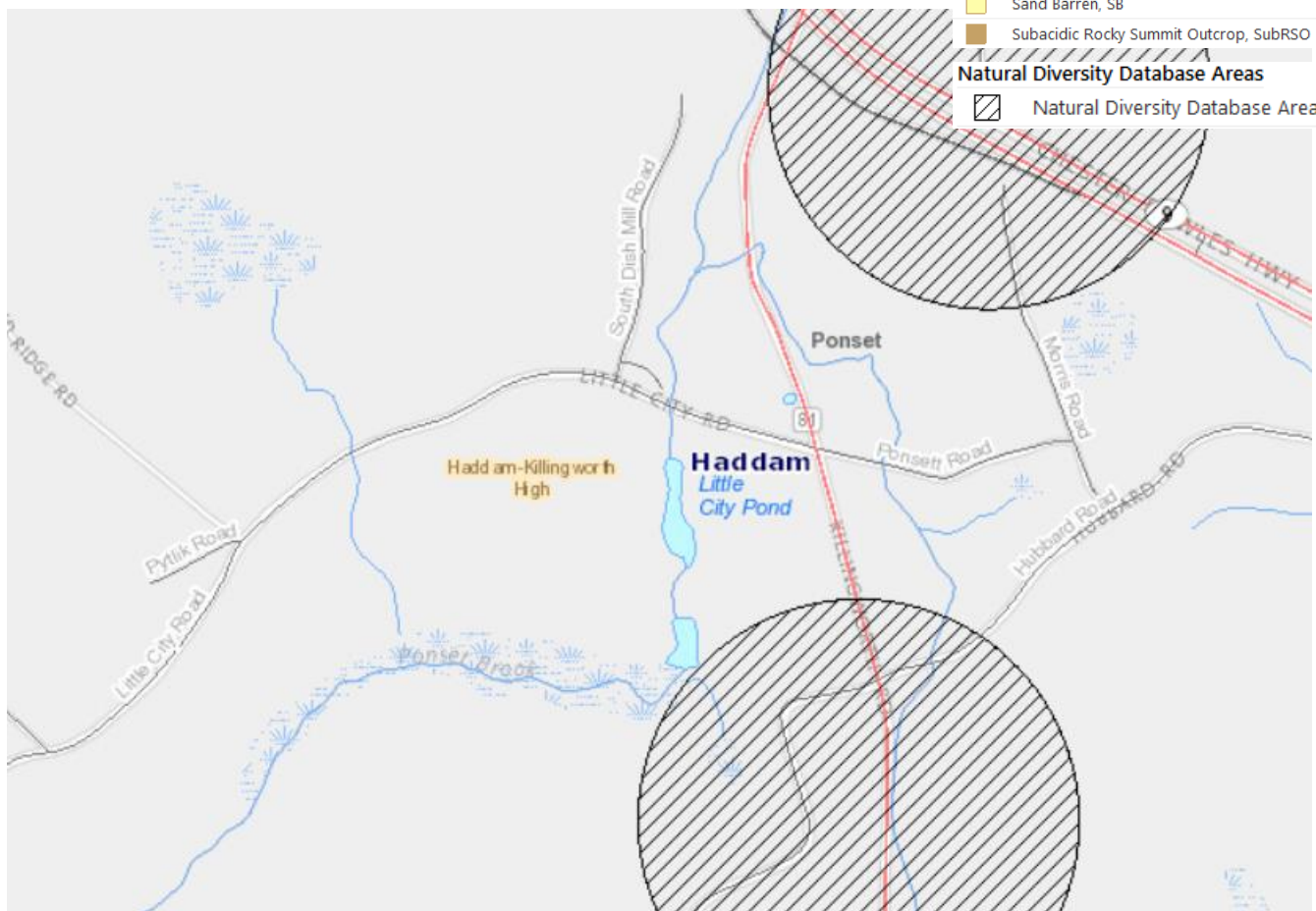
http://cteco.uconn.edu/guides/Critical_Habitat.htm.

Natural Diversity Database from the CT Dept. of Energy and Environmental Protection. More information in the CT ECO Data Guide

http://cteco.uconn.edu/guides/Natural_Diversity_Database.htm

Critical Habitat	
	Beachshore, B
	Intertidal Marsh, IM
	Acidic Atlantic White Cedar Swamp, AAWCS
	Acidic Red/Black Spruce Basin Swamp, AcR/BSS
	Circumneutral Northern White Cedar Swamp, CirNWCS
	Floodplain Forest, FF
	Beachshore, B
	Circumneutral Spring Fen, CirSF
	Floodplain Forest, FF
	Freshwater Aquatic, FA
	Medium Fen, MF
	Poor Fen, PF
	Rich Fen, RF
	Sea Level Fen, SLF
	Coastal Woodland/Shrubland, CWS
	Dry Acidic Forest, DAF
	Dry Circumneutral Forest, DCF
	Dry Subacidic Forest, DSF
	Old Growth Forest, OGF
	Subacidic Cold Talus Forest/Woodland, SubCTFW
	Acidic Rocky Summit Outcrop, AcRSO
	Alluvial Grassland/Outcrop, ALLG/O
	Circumneutral Rocky Summit Outcrop, CirRSO
	Coastal Bluffs and Headlands, CBH
	Coastal Grassland, CG
	Sand Barren, SB
	Subacidic Rocky Summit Outcrop, SubRSO

Natural Diversity Database Areas
 Natural Diversity Database Area



Water Resources

Watersheds from the CT Dept. of Energy and Environmental Protection. More information in the CT ECO Data Guide

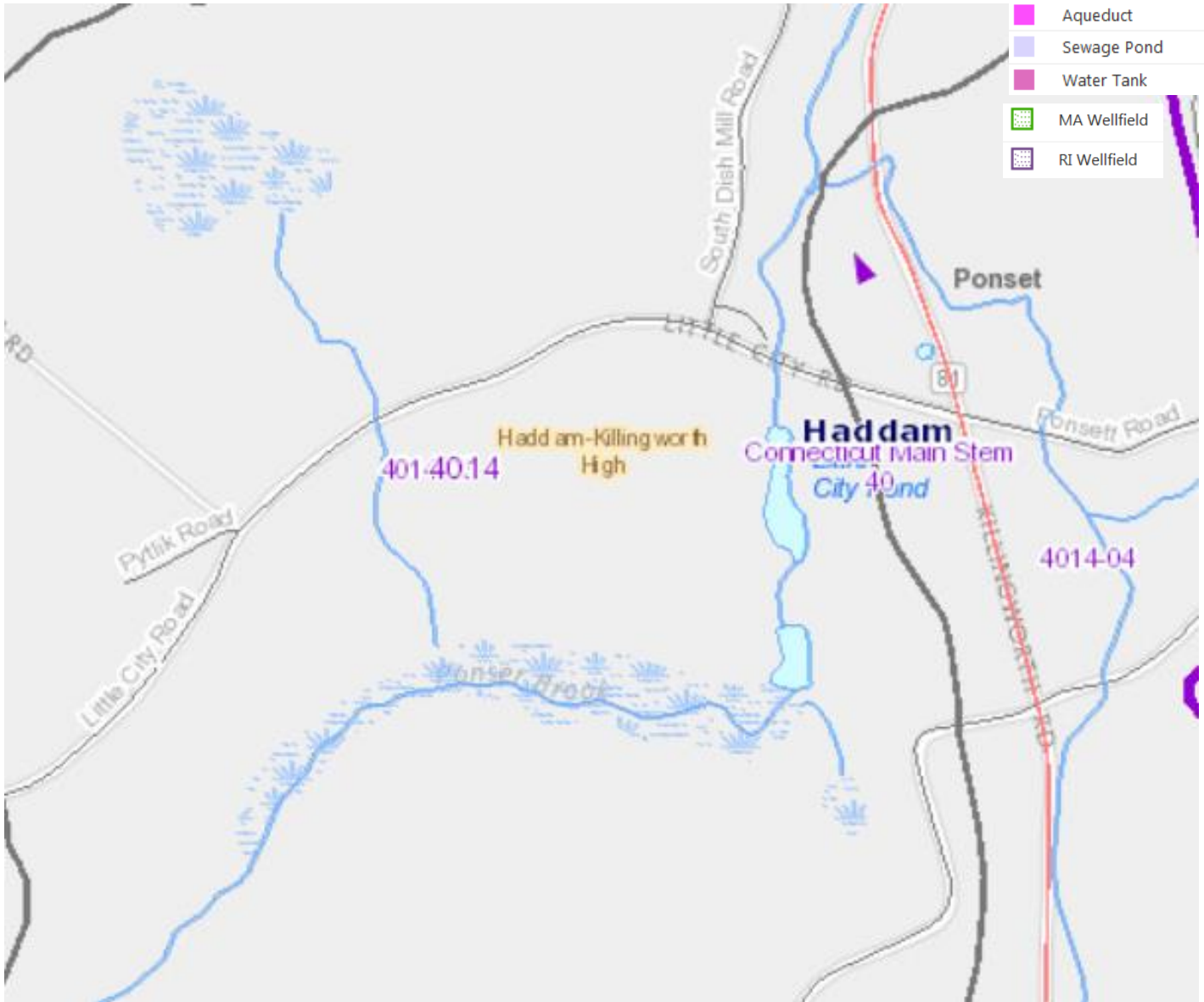
http://cteco.uconn.edu/guides/Local_Basin.htm.

Hydrography from the USGS.

Wellhead Protection Areas is from CT DEEP.

Basemap is Hillshade derived from Lidar.

- Major Basin
- Regional Basin
- Subregional Basin
- Local Basin
- ▲ Outlet Direction
- ▲ Main Stem Direction
- ▲ Coastal Direction
- Water
- Intermittent Water
- Flats
- Rocks
- Inundated Area
- Marsh
- Cranberry Bog
- Dam
- Fish Hatchery
- Aqueduct
- Sewage Pond
- Water Tank
- MA Wellfield
- RI Wellfield



Water Quality

Surface and ground water quality classifications from the CT Dept. of Energy and Environmental Protection. More information in the CT ECO Data Guide http://cteco.uconn.edu/guides/water_quality_class.htm.

Basemap is Hillshade derived from Lidar.

