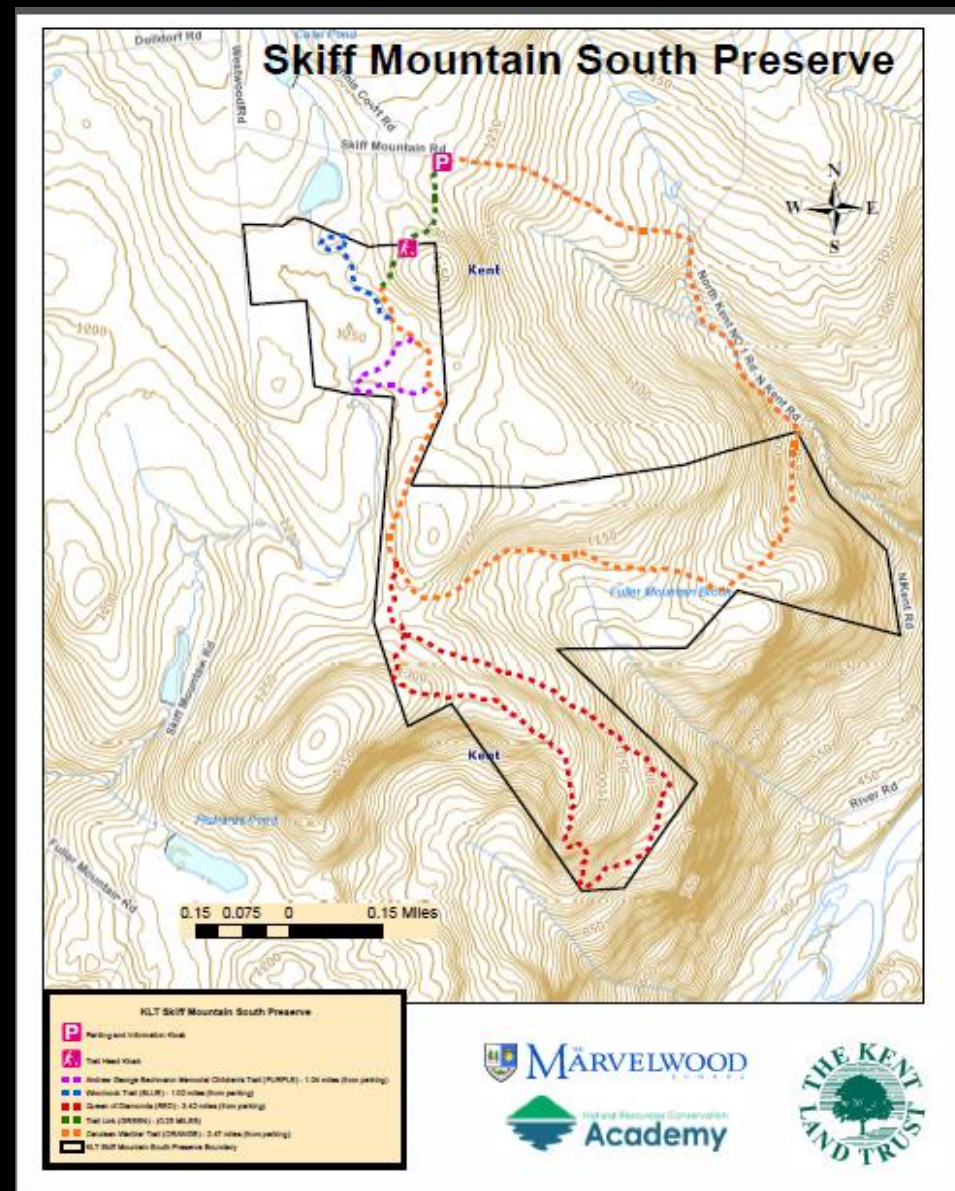


Skiff Mountain South Preserve Trail Guide



The 250± acre Skiff Mountain South Parcel Preserve. The South Parcel is adjacent to 1,146 acres of Appalachian Trail land protected by the National Park Service, and lies within 5,300 acres of protected land which includes Macedonia Brook State Park, the Appalachian Trail corridor and land trust-owned properties. In 2009, neighbors surrounding the South Parcel ensured that an additional 705 acres boarding the South Parcel was permanently protected from development though conservation easements funded by the Federal Forest Legacy Program. According to the USDA website, “the Forest Legacy Program is a partnership between States and the USDA Forest Service to identify and help conserve environmentally important forests from conversion to non-forest uses, primarily via conservation easements.”

Historic stonewalls, remnants left from when the land was owned and farmed by the Skiff and other local families, dot the landscape. Charcoal mounds can also be found scattered throughout the property. The preserve is largely forested, with some early successional habitat and old fields along the edges which are rapidly disappearing due to lack of management and forest re-growth.

Many sensitive avian species have been observe on the property. The land trust has a responsibility to help species at risk by managing habitat, keeping common birds common, and encouraging voluntary partnership for birds, habitats, and people. This area has tremendous biodiversity, and close to 100 species have been documented utilizing the property since 2001.

This trail system has been created to enable the public, particularly the children, to explore the natural treasures that exist here.

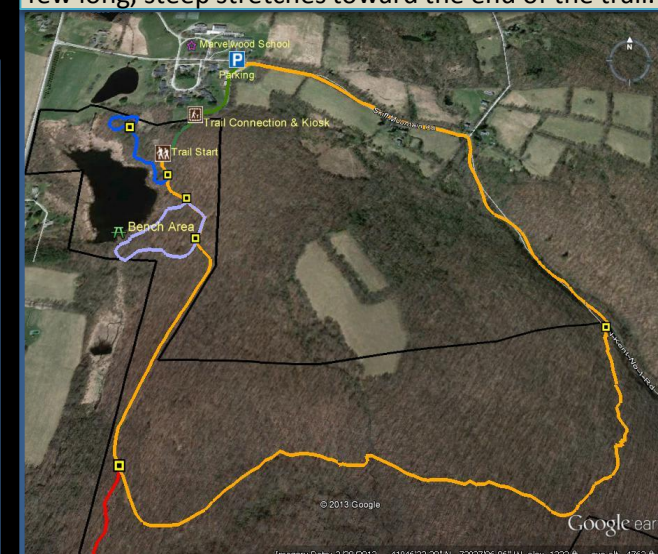
This project is a community partnership between Kent Land Trust, Marvelwood School Students, and the University of Connecticut’s Natural Resources Conservation Academy.

Cerulean Warbler Trail – Orange Loop

Rank: Moderate to Difficult

Trail Distance: 2.47 miles (from parking)

This trail is an old road and can be rocky and wet in areas but is worth the effort. In fact during the breeding season you might even hear or see Cerulean Warblers! The trail leads you through a wetland, ephemeral vernal pools, a seasonal stream and mature forest before linking up with a gravel road which runs parallel to North Kent Brook. Be sure to head North on the road past an old house foundation to return to the parking area. Warning: There are a few long, steep stretches toward the end of the trail.

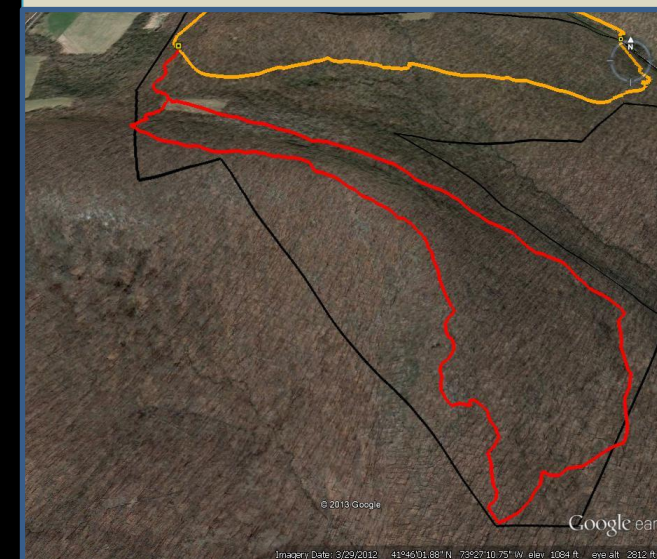


Queen of Diamonds Trail – Red Loop

Rank: Difficult (Experienced Hikers Only)

Trail Distance: 3.42 miles (from parking)

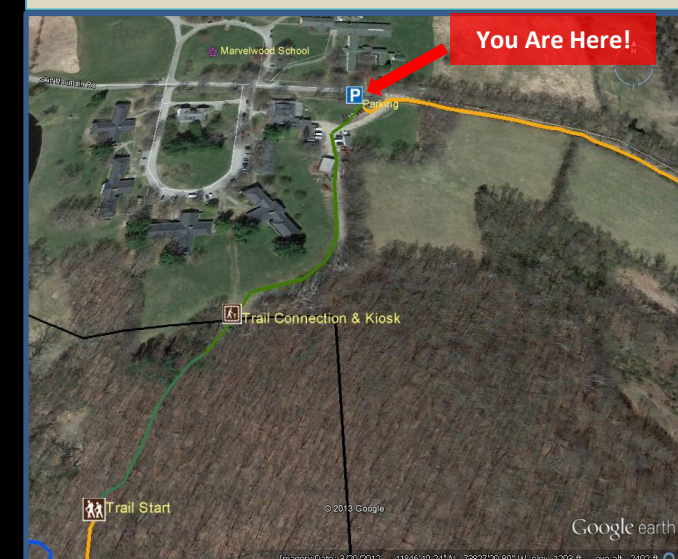
If you only walk to the old field and back then this is a moderately difficulty trail with over 80 species of birds documented. Once you get to the field then the trail is beautiful but becomes rocky and steep and is better left to experienced hikers. Notable bird species on this trail include the Cerulean Warbler, Worm-eating Warbler and Scarlet Tanager. The field is also an excellent area to search for butterflies in July, August and September.



Parking, Kiosks & Trail Connector

Parking to Trail Connector: 0.25 miles (this distance is included in all trail lengths)

The small parking lot for KLT’s Skiff Mountain South Preserve is located near the maintenance area at Marvelwood School, on your right just past the flagpole and main campus on your left. From the parking area travel through the service area to a gravel road with a steep slope for 0.25 miles until you come to second Kiosk and trail head sign near the school’s pump house. When school is in session please watch for moving vehicles in this area.

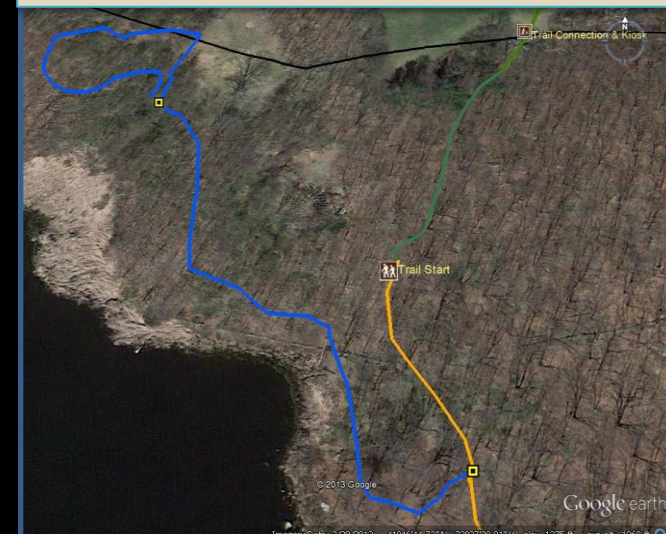


Woodcock Trail – Blue Loop

Rank: Easy to Moderate

Trail Distance: 1.02 miles (from parking)

This narrow trail is designed to introduce people of all ages to birds. Stroll through wetland and early-mid successional forest. View a portion of one of Marvelwood School’s three avian research stations and learn about a few of the bird species that can be found on the property.



Andrew George Bachmann Memorial Trail Purple Loop

Rank: Easy to Moderate

Trail Distance: 1.04 miles (from parking)

This trail is designed for children and families. Cartoon characters are used to help introduce children to wildlife that can be found on Skiff Mountain, particularly the bird species.

