



Bat Station

How many bat acoustic guilds can you observe?

- 45-50 kHz (Toes)
- ~40 kHz (J-shape)
- ~30 kHz
- <20-25 kHz

Total guilds observed: _____



UV Lighting Station



How many insect orders can you find?

- Ephemeroptera** (mayfly)
- Odonata** (dragonfly, damselfly)
- Phasmatodea** (stick insect)
- Orthoptera** (grasshopper, katydid, cricket)
- Mantodea** (praying mantis)
- Blattodea** (cockroach, termite)
- Dermaptera** (earwig)
- Plecoptera** (stonefly)
- Psocodea** (bark louse)
- Hemiptera** (true bug)
- Thysanoptera** (thrips)
- Neuroptera** (lacewing, antlion, mantisfly)
- Megaloptera** (dobsonfly, fishfly)
- Coleoptera** (beetle)
- Mecoptera** (scorpionfly)
- Diptera** (fly)
- Trichoptera** (caddisfly)
- Lepidoptera** (butterfly, moth)
- Hymenoptera** (ant, bee, wasp)



Total orders found: _____



Voices of the Night Station

How many species can you identify?

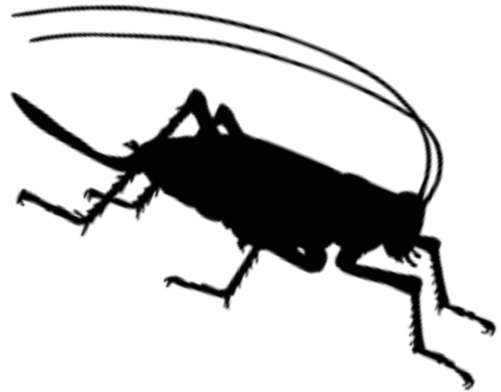
Amphibians (Toads and Frogs)

- American Toad
- Bullfrog
- Eastern Spadefoot
- Spring Peeper
- Gray Treefrog
- Green Frog
- Pickerel Frog
- Wood Frog



Insects (Crickets, Katydid, etc...)

- Four-spotted Tree Cricket
- Narrow-Winged Tree Cricket
- Davis' Tree Cricket
- Snowy Tree Cricket
- Spring and Fall Field Cricket
- Allard's Ground Cricket
- Striped Ground Cricket
- Northern Mole Cricket
- Common True Katydid
- Oblong-Winged Katydid
- Sword-bearing Conehead
- Slightly Musical Conehead



Birds (Owls)

- Barred Owl
- Great Horned Owl
- Eastern Screech-Owl



Total species heard: _____

Bat Station

How many bat acoustic guilds can you observe?

- 45-50 kHz (Toes)
- ~40 kHz (J-shape)
- ~30 kHz
- <20-25 kHz

Total guilds observed: _____

UV Lighting Station



How many insect orders can you find?

- Ephemeroptera** (mayfly)
- Odonata** (dragonfly, damselfly)
- Phasmatodea** (stick insect)
- Orthoptera** (grasshopper, katydid, cricket)
- Mantodea** (praying mantis)
- Blattodea** (cockroach, termite)
- Dermaptera** (earwig)
- Plecoptera** (stonefly)
- Psocodea** (bark louse)
- Hemiptera** (true bug)
- Thysanoptera** (thrips)
- Neuroptera** (lacewing, antlion, mantisfly)
- Megaloptera** (dobsonfly, fishfly)
- Coleoptera** (beetle)
- Mecoptera** (scorpionfly)
- Diptera** (fly)
- Trichoptera** (caddisfly)
- Lepidoptera** (butterfly, moth)
- Hymenoptera** (ant, bee, wasp)



Total orders found: _____



Voices of the Night Station

As a team, identify as many animals (including insects) as you can, either visually or audibly. Use the following to help:

- Amphibian & Reptile Guides (laminated sheets)
- Resources/Apps on iPad:
 - *Voices of the Night powerpoint*
 - Utilities folder > Drive app > iCloud > CAP 2022 > play slideshow to hear audio clips



- *Seek app* (CAP apps folder)
- *Merlin Bird ID app* (CAP apps folder) - select **Sound ID**



Must show PROOF of observation such as photo, audio recording, app screenshot, etc.

List species identified below:



Total species identified: _____